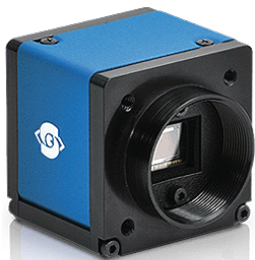


SVS-VISTEK



ECO Series

0.3 - 12 megapixel
Mono / Color
C / CS mount
GigE interface

An ECO fits into any type of application. The ECO series impresses with its minimal footprint. And that even without compromising on performance.



ECO Standard ECO 410 ECO PoE ECO IP67 >>BlackLine<<



EXO Series

1.6 - 31.4 megapixel
Mono / Color
C / M42 / MFT mount
Camera Link / GigE / USB3 interface

The EXO series is designed to create an Industrial camera allowing easy and scalable integration, providing rich functionality with minimal design-in effort.



EXO Camera Link EXO GigE EXO USB3 EXO Tracer



FXO Series

5 - 24.5 megapixel
Mono / Color
C mount
10GigE / CXP-12 1 Lane interface

The FXO series combines the outstanding image quality of the Sony Pregius S sensor with the most modern high-speed interfaces.



FXO CoaXPress FXO 10GigE



HR Series

16 - 122 megapixel
Mono / Color
M58x0.75 mount
10GigE / CL 80-Bit / CL Medium / CXP-6 4 Lanes / Dual GigE interface

HR series cameras achieve the highest possible resolutions for industrial machine vision. The data interfaces are the most powerful interfaces in the machine vision world.



HR Camera Link HR 10GigE / Dual GigE HR CoaXPress



SHR Series

47 - 151 megapixel
Mono / Color
M72x0.75 mount
10GigE / CL Medium / CXP-6 2 Lanes / CXP-6 4 Lanes / CXP-12 4 Lanes interface

Very high resolution with large pixels: The SHR shines when maximum resolution and top image quality are required for your task.



HSR CoaXPress HSR Camera Link HSR 10GigE



Beyond Visible Series

0.3 - 12.3 megapixel
Mono polarized / SWIR / UV
C mount
10GigE / CXP-12 1 Lane / GigE / USB3 interface

These specialized cameras leverage standard industrial imaging systems in terms of technology with polarization planes or wavelengths from infrared to ultraviolet.



SWIR Ultraviolet Polarized

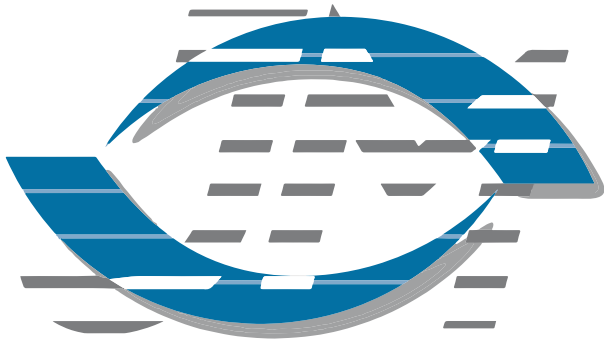


JM VisTec System
"Our Vision. Tomorrow's Innovation"
The Machine Vision Specialist

info@jm-vistec.com

SCAN ME FOR MORE INFO





JM VisTec System

“Our Vision, Tomorrow’s Innovation”

The Machine Vision Specialist

+65 6748 5517 info@jm-vistec.com jm-vistec.com

SINGAPORE HQ : 10 KAKI BUKIT AVE 1 #07-06, SINGAPORE 417942



Regional Contact Information

SG & MALAYSIA	Tel : +65 6748 5517 Email : info@jm-vistec.com	Fax : +65 6748 5507
THAILAND	Tel : +66 2 541 4316 Email : info@jm-vistec.com	Fax : +66 2 541 4318
CHINA SUZHOU	Tel : +86 512 6658 2891 Email : info@jm-vistec.com	Fax : +86 512 6878 6837
CHINA SHANGHAI	Tel : +86 512 6658 2892 Email : info@jm-vistec.com	Fax : +86 512 6878 6837
CHINA SHENZHEN	Tel : +86 136 1297 4521 Email : info@jm-vistec.com	Fax : +86 755 8637 0227
TAIWAN	Tel : +886 2 2704 1699 Email : info@jm-vistec.com	Fax : +886 2 2704 1899

-  <https://www.facebook.com/jmvistec>
-  <https://www.instagram.com/jmvistecsystem/>
-  <https://www.linkedin.com/company/jmvistecsystem/>
-  <https://twitter.com/jmvistec>
-  https://www.youtube.com/channel/UCMBZ_kC46xlrT03Wwdlv_kg