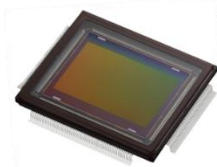


# CMOS IMAGE SENSORS

*Canon CMOS Sensors Expand Your Possibilities*

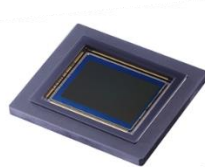
Product	Shutter Type	Image Size	Resolution	Pixel Size (µm)	Chroma	IF	Max Frame Rate (fps)	Application
LI7050SAC	Rolling Shutter	1/1.8"	2.1M	4.1	Colour	MIPI CSI2	60 (Normal 12bit) 30 (HDR 12bit)	Surveillance
<b>Coming soon</b> LI7060SAC	Rolling Shutter	1/2.32"	2.8M	3.2	Colour	MIPI CSI2	60	Surveillance
3U5MGXSBAM	Global Shutter	2/3"	5M	3.4	Monochrome	LVDS	120	Industry
3U5MGXSBAC	Global Shutter	2/3"	5M	3.4	Colour	LVDS	120	Industry /Surveillance
3U5MGXSBAI	Global Shutter	2/3"	5M	3.4	Colour-NIR	LVDS	120	Industry /Life Science/Medical
LI5020SAM	Global Shutter	2/3"	5M	3.4	Monochrome	LVDS	120	Industry
LI5020SAC	Global Shutter	2/3"	5M	3.4	Colour	LVDS	120	Industry /Surveillance
LI5020SAI	Global Shutter	2/3"	5M	3.4	Colour-NIR	LVDS	120	Industry /Life Science/Medical
LI7010	Rolling Shutter	Super 35mm	10M	6.4	Colour	LVDS	60	Surveillance
LI7030SAC	Rolling Shutter	1"	12M	3.2	Colour	LVDS	60 (4K2K)	Surveillance
120MXSM	Rolling Shutter	APS-H	120M	2.2	Monochrome	LVDS	9.4	Industry
120MXSC	Rolling Shutter	APS-H	120M	2.2	Colour	LVDS	9.4	Surveillance /Industry
120MXSI	Rolling Shutter	APS-H	120M	2.2	Colour-NIR	LVDS	9.4	Life Science/Medical /Surveillance
LI8020SAC	Rolling Shutter	APS-H	250M	1.5	Monochrome	LVDS	5	Surveillance /Industry
LI8020SAM	Rolling Shutter	APS-H	250M	1.5	Colour	LVDS	5	Surveillance /Industry



**ULTRA-HIGH 250MP RESOLUTION**

**250MP CIS\***  
Model: LI8020SA

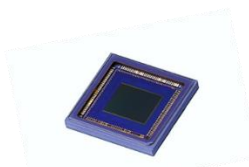
The LI8020SA is an ultra-high resolution CMOS sensor at 250 megapixels in APS-H format (29.37mm x 18.90mm) with a 1.5µm pixel size, and all pixel progressive reading of 5 fps.



**HIGH 120MP RESOLUTION**

**120MP CIS**  
Model: 120MXS

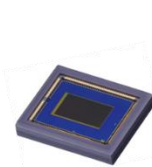
The 120MXS is an ultra-high resolution CMOS sensor at 120 megapixels in APS-H format (29.22mm x 20.20mm) with a 2.2µm pixel size and all pixel progressive reading of 9.4 fps.



**HIGH SPEED LOW POWER**

**5MP Global Shutter CIS**  
Model: LI5010/LI5020SA

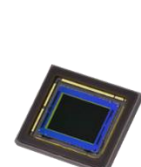
The LI5010/LI5020SA global shutter CMOS sensor deploys an innovative new pixel design to achieve 120 fps at only 500mW power consumption.



**2.1MP HDR**

**2.1MP Surveillance FHD CIS**  
Model: LI7050SA

The 1/1.8" LI7050 features approximately 2.1 million effective pixels (1936 x 1096), pixel pitch of 4.1 µm per side and a framerate of 60 fps (30 fps during HDR drive operation), the MIPI CSI-2 interface.



**12MP 1-inch**

**12MP CIS**  
Model: LI7030SA

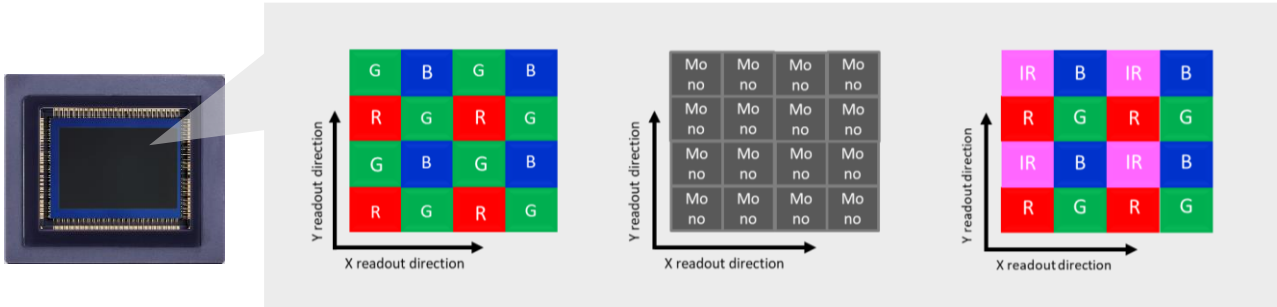
The LI7030SA is a size equivalent to 1 inch, and 3.2 µm square pixel arrangement with 12MP. 4K3K video at 24 fps (12bit), 4K2K video at 60 fps (10bit) and HD720p video at 120 fps (10bit) are possible.

\* CIS:CMOS image sensor

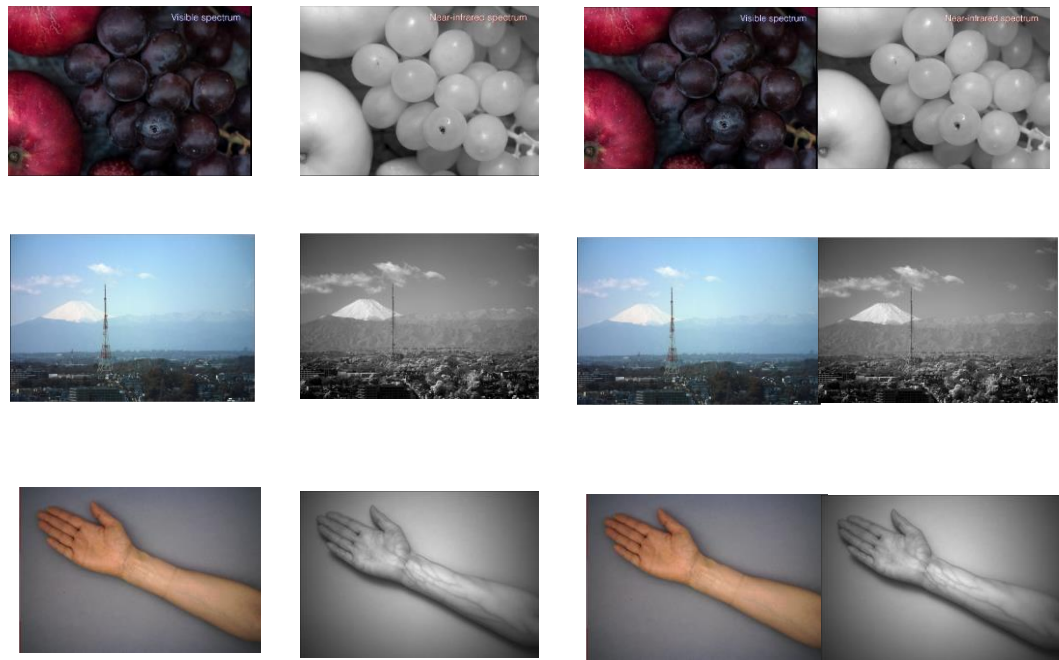


# Specialized RGB-NIR Pixel Filter Array

By replacing one of the green filters on a standard color CMOS sensor with a Near Infra-Red (NIR) filter, image processing from this sensor allows for the separation of visible and NIR spectrums. Discrete analysis of these bands from a single image simplifies dual sensor systems by reducing size, weight, and power (SWaP) requirements, provides added capabilities to systems that can benefit from the additional band.



- Factory Automation**
- Food Inspection**
  - Products quality management
  - Foreign object detection
- Surveillance/ Security**
  - Wide area monitoring
  - NDVI/precision agriculture
- Biology/Medical**



Capable of simultaneous acquisition of visible-light and near-infrared wavelength images

