

# 1.3MP 128Fps USB3.0 Camera

**Super Speed! USB 3.0  
SXGA 128 fps!!**



**IMx-3217UP**

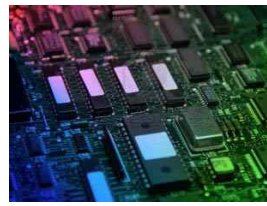
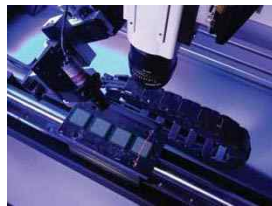
## Main Features

- 1280 X 1024 Active Pixels, 1/2" Optical Format
- 4.8um x 4.8um
- Global Shutter
- High bandwidth and Low CPU usage
- Power Supply Management Support
- Operation Temp/ Storage Temp  
(-5°C to 45°C / -30°C to 60°C)
- Plug and Play Interface

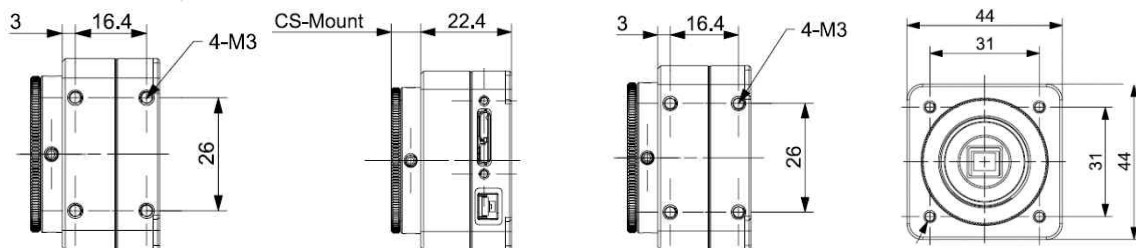


## Application

- Machine Vision
- Motion Monitoring
- Sports Science (Motion Analysis etc.)
- Barcode Scanning (2D)



## Product Image



## Specification

Model Name	IMx-3217UP(IMB- BW, IMC- Color)
Image Sensor Type	1/2" CMOS (PYTHON1300)
Effective pixels	1,310,720 pixels 1280 (H) x 1024 (V)
Picture Size	1280(H) x 1024(V)
Cell Size(um)	4.8 um x4.8 um
Real Frame Rate	128 (1280 x 1024 , Mono8, BayerRG8) 61 (1280 x 1024 , Mono12, BayerRG12)
Lens Mount	C-Mount
Shutter	Global Shutter
ROI	Partial Scan (Unit: 4x4)
Trigger Mode	Mode 0, 15 (Photo-coupler)
Strobe	Support Normal Mode (Photo-coupler)
Memory Save/Load	9 Channels(0:factory, 1~4:feature, 5~8:mode/feature)
Control Functions	Brightness, Sharpness, Gamma, Auto-Exposure, Shutter, Gain, User Defined LUT,
Digital Interface / Transfer Rate	USB3.0 / 5Gbps
Gain	0 ~ 30 dB (Manual or Auto control)
Shutter Speed	1 usec ~ 1000 msec (Manual or Auto control)
Data Depth	10 bit
Dynamic Range	60dB in global shutter mode
S/N Ratio	40dB or better
Supply Voltage& Power	Less than 3.0W @5 VDC via USB 3.0 Cable
External Dimension / Weight	44(W) x 44 (H) x22.4(D) mm / Approx 55g
Operation Temp/ Storage Temp	-5°C to 45°C / -30°C to 60°C

\* All specifications are subject to change without notice.

# VGA 600fps USB 3.0 Camera

**Super Speed! USB 3.0  
VGA 600fps!!**



**IMx-3213UP**

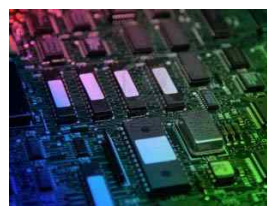
## Main Features

- VGA: 640 x 480 Active Pixels, 1/4" Optical Format
- 4.8um x 4.8um
- Global Shutter
- High bandwidth and Low CPU usage
- Power Supply Management Support
- Operation Temp/ Storage Temp  
(-5°C to 45°C / -30°C to 60°C)
- Plug and Play Interface

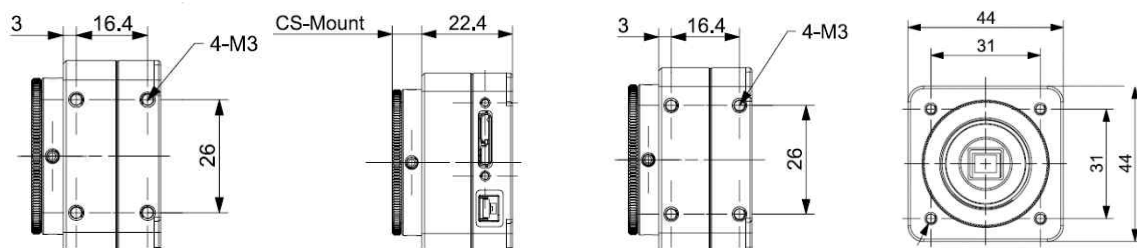


## Application

- Machine Vision
- Motion Monitoring
- Sports Science (Motion Analysis etc.)
- Barcode Scanning (2D)



## Product Image



## Specification

Model Name	IMx-3213UP(IMB- BW, IMC- Color)
Image Sensor Type	1/4" CMOS (PYTHON300)
Effective pixels	307,200 pixels 640 (H) x 480 (V)
Picture Size	640(H) x 480(V)
Cell Size(um)	4.8 um x4.8 um
Real Frame Rate	598 (640 x 480 , Mono8, BayerRG8) 400 (640 x 480 , Mono12, BayerRG12)
Lens Mount	C-Mount
Shutter	Global Shutter
ROI	Partial Scan (Unit: 4x4)
Trigger Mode	Mode 0, 15 (Photo-coupler)
Strobe	Support Normal Mode (Photo-coupler)
Memory Save/Load	9 Channels(0:factory, 1~4:feature, 5~8:mode/feature)
Control Functions	Brightness, Sharpness, Gamma, Auto-Exposure, Shutter, Gain, User Defined LUT
Digital Interface / Transfer Rate	USB3.0 / 5Gbps
Gain	0 ~ 30 dB (Manual or Auto control)
Shutter Speed	1 usec ~ 1000 msec (Manual or Auto control)
Data Depth	10 bit
Dynamic Range	60dB in global shutter mode
S/N Ratio	40dB or better
Supply Voltage& Power	Less than 3.0W @5 VDC via USB 3.0 Cable
External Dimension / Weight	44(W) x 44 (H) x22.4(D) mm / Approx 55g
Operation Temp/ Storage Temp	-5°C to 45°C / -30°C to 60°C

\* All specifications are subject to change without notice.